

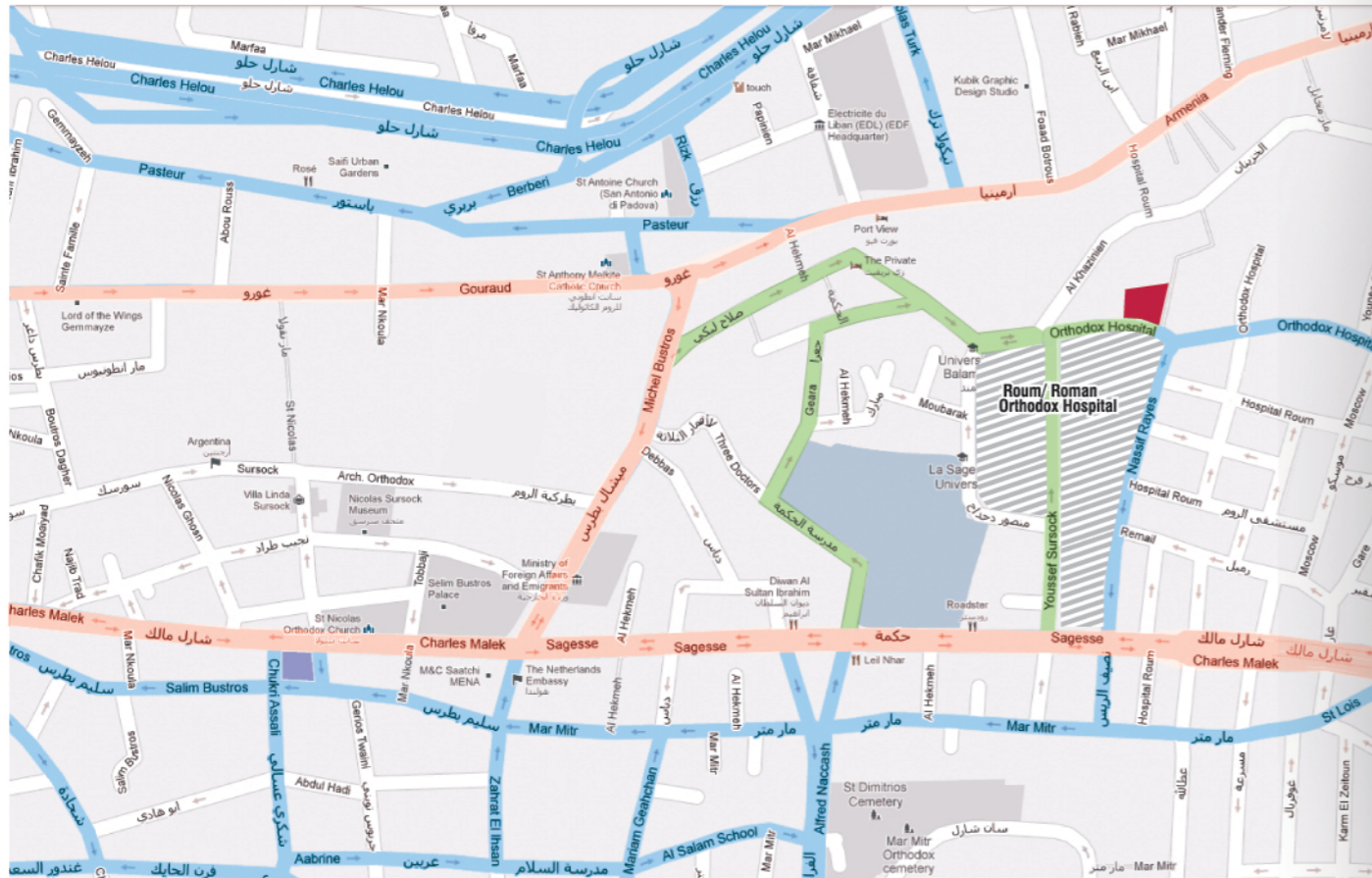
GRAPHITE 834

a c h r a f i e h



834

HOW TO GET TO GRAPHITE 834



WELCOME TO YOUR
DREAM HOUSE
IN THE HEART OF
ACHRAFIEH

GRAPHITE⁰⁸
achrafieh







At less than 1 Km from downtown Beirut, **Graphite 834** lies in the neighborhood of the famed **Roum Orthodox | Roum Hospital** in Achrafieh.

A superior structure in a central location with surroundings that are calm, relaxing and away from the traffic of the city. At the same time, the building is just a few minutes away from the busy streets, restaurants, fashion boutiques and the very well known "Abc Mall" in Achrafieh.

Graphite 834 is located in an exclusive environment; where every aspect of "good living" is present. During the day, you can enjoy beautiful sunlight, a soft breeze, and a breathtaking view of the sea.



-  **Roum Orthodox Hospital**
-  **Roads leading to Graphite 834**
-  **Main Roads | neighboring areas**
-  **Graphite 834 | a prime location**



 **ARCHITECT RONALD BAZ**
Architecture Design and Urban Planning

 structure by **CHARLES TAHAN**

 **DEVCON** Development by **Devcon**

 **Tony G. Abi Nakhoul**
Mechanical Engineer
MEP Design And Consultancy

TYPICAL FLOOR PLAN A
165 m2



TYPICAL FLOOR PLAN B
126 m2



GENERAL INFORMATION

- **Prime** location with easy access to Downtown, Gemayzeh, and ABC achrafieh.
- **360° view**; a panoramic sight extending from jounieh to beirut air port.
- A **state of the art** architectural design that meets today's modern lifestyle. An outstanding facade and clean finishing inside out.
- **4 underground parking** floors, ventilated by industrial fans and ducts. Floors and walls covered with protective layers of epoxy. Each apartment has a designated parking space.
- Roof covering executed with modified **membrane and polystyrene insulation boards**.
- **Earthing line and faraday steel cage** to protect the building against lightning.
- **Generator with automatic transfer**; switch and independent fuel tank room equipped with fire proof system.
- **Entrance and stairs** tiled with soft colored granite, equipped with **video phone camera (CCTV)**. Main door made of **tempered glass**.
- **Concierge room** includes a kitchen and a bathroom at ground level.

Graphite residential apartments are built in a strategic location for people that want to be close to the capital without having to deal with city commotion.

A private property with a spectacular **360°** view.



APARTMENT SPECIFICATIONS

Tiling:

60cm x 60cm BOTTICINO marble.
Grade A Italian, Spanish, and generic ceramic tiles.

Paint:

3 layers of base putty and 3 finish coats (Tinol or Toupret).

Kitchen:

High pressure water resistant laminated box and wood veneer, in addition to Oven venting.

Wood work:

Massif solid woodwork and MDF.

Aluminum work:

Technal Aluminum with double glazing and electric shutters.

Climate control:

Ducted concealed split air-conditioning.

Sanitary:

Ideal Standard - Grohe - Villeroy & Boche - Idevit

Electric:

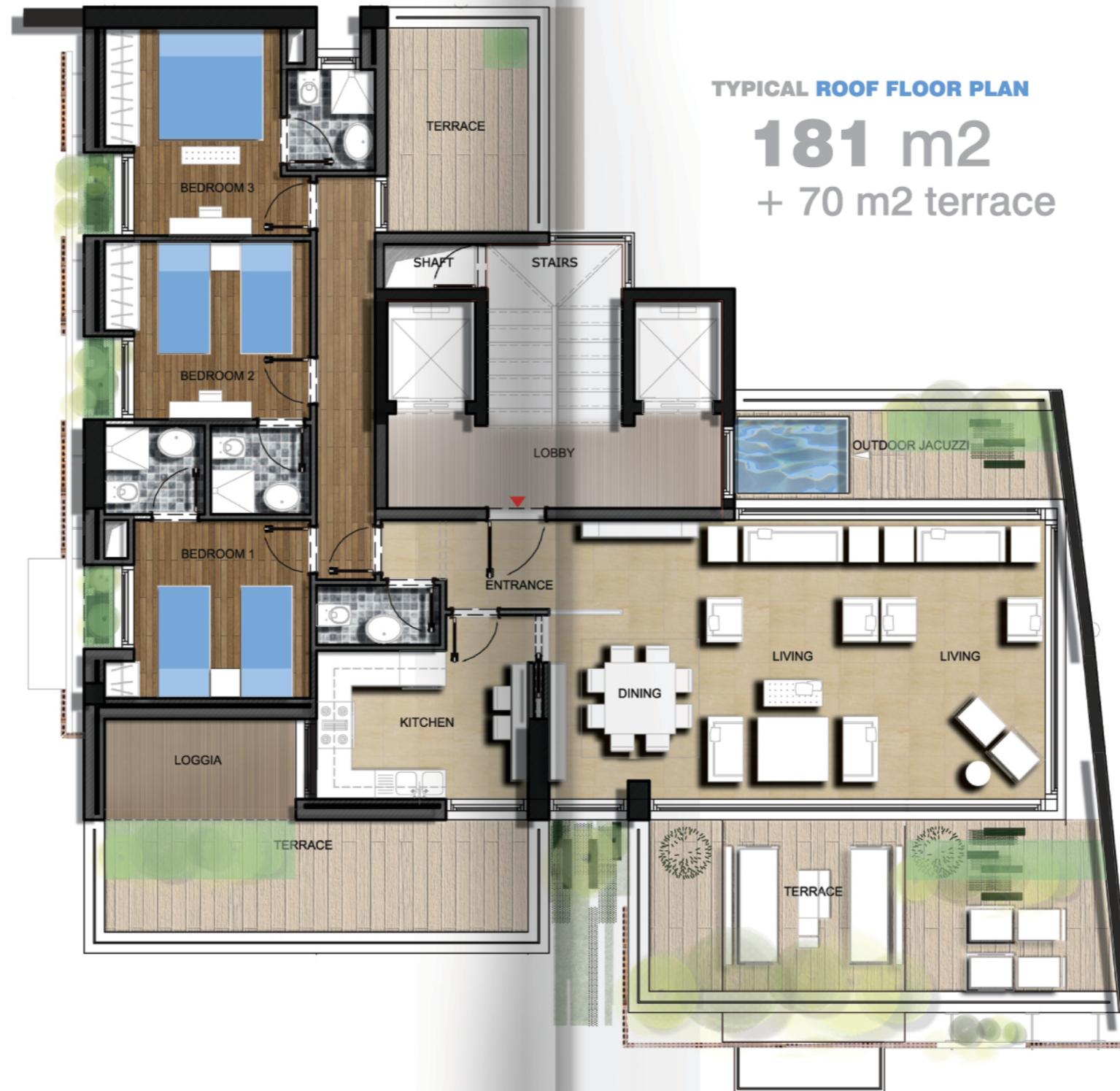
ABB for main board and Le Grand or equivalent for sockets.

Elevators:

Otis/ Mitsubishi with double variable speed.

Water Supply:

1000 Liters tank for each apartment and a main collective water tank sourced by water well community water.



Enjoy urban living at its finest.



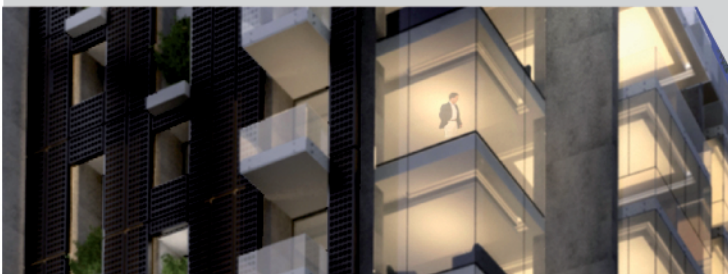
4
3
00



GRAPHITE 834

a c h r a f i e h

a project by



contact information:

+961 | 70 | 030000

sales@devconlb.com

www.devconlb.com